



Flout® DOSE COUNTER Model DC3 INSTALLATION INSTRUCTIONS

(#'s) = Illustration Figure Numbers

ABOUT THE COUNTER:

The DC3 Counter is a mechanical tally counter for monitoring the fill/empty cycle of a dosing chamber or similar vessel. It requires no batteries or wiring. It is housed in a water resistant enclosure. It is controlled by a weighted "Activator" (3) suspended by a non-corrosive wire. An internal seal allows the wire to trigger the counter while keeping out water and contaminants. A dessicant pouch (1) helps to minimize moisture within the enclosure. The Counter mounts on 3"(75mm) Sch 40 pipe. A rise and fall of 6" (150mm) is required to cycle the counter*.

MOUNTING THE COUNTER:

The Counter may be mounted inside or outside of the chamber. Brackets, pipe, fittings, and hardware are supplied by the installer.

The Activator (3) may hang free (8,10,12) or be "pipe mounted" inside a 3" pipe (9,11). Pipe mounting is the preferred method if there is turbulence or a chance of entanglement of the pull wire with other equipment in the chamber. **IMPORTANT:** The pipe must be vertical, must allow liquid to enter (bevel bottom), and be vented (1/2" hole) above the highest water line to prevent an air pocket from forming (9,11).

Inside mounting may use a short piece of 3" pvc pipe and brackets (8), or be "pipe mounted" (9).

Outside mounting requires a passage through the chamber ceiling. The Counter may be above grade on an extended stand pipe (5), flush with grade (6), or in a "Hand Hole" (7).

Passage thru the chamber ceiling may be pre-cast or drilled. Some methods are: A 3 inch pipe coupler cast in (10), "pipe mounted" through a 4 inch sleeve cast in, with a 3x4 inch "Fernco" coupler" (11), or free hanging through a small hole with the stand pipe attached to an overturned closet flange (12). When using a small hole, an large access hole must be nearby to attach the Activator.

SETTING THE ACTIVATOR:

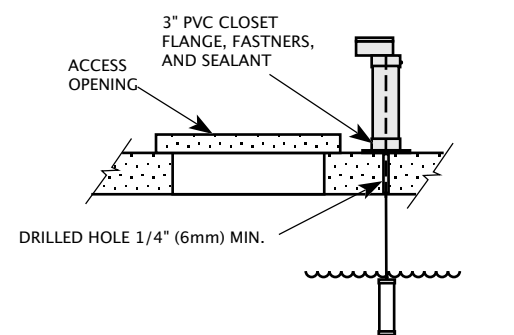
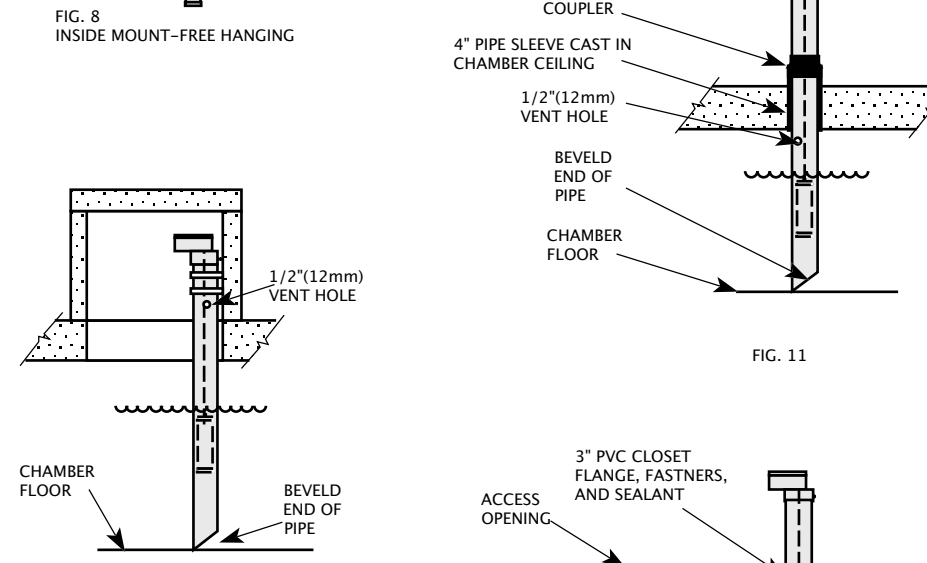
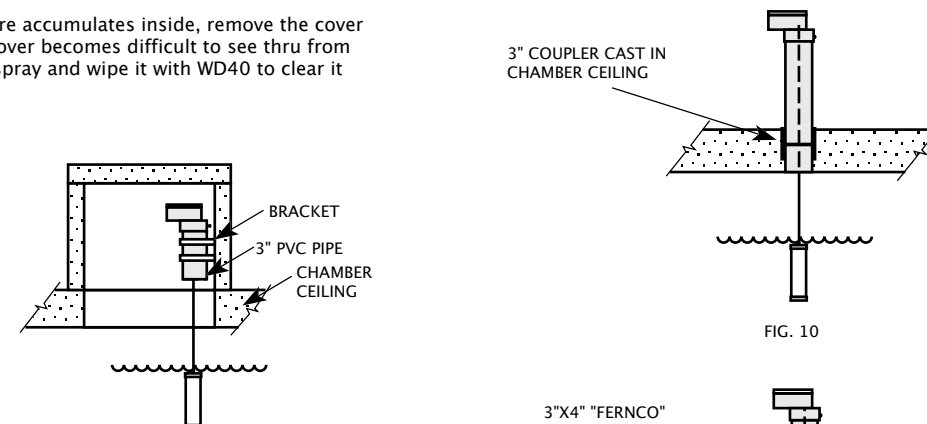
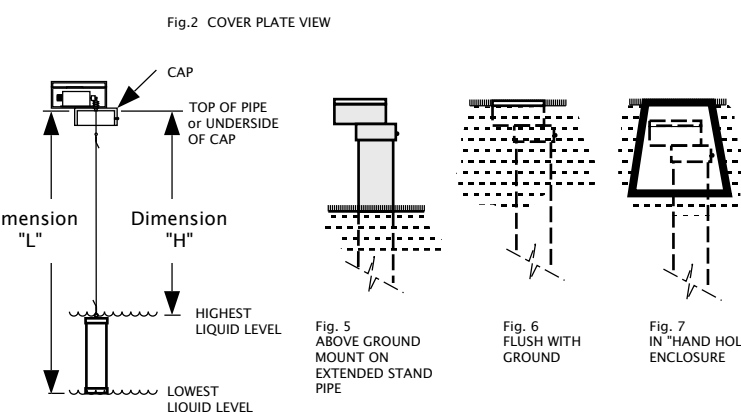
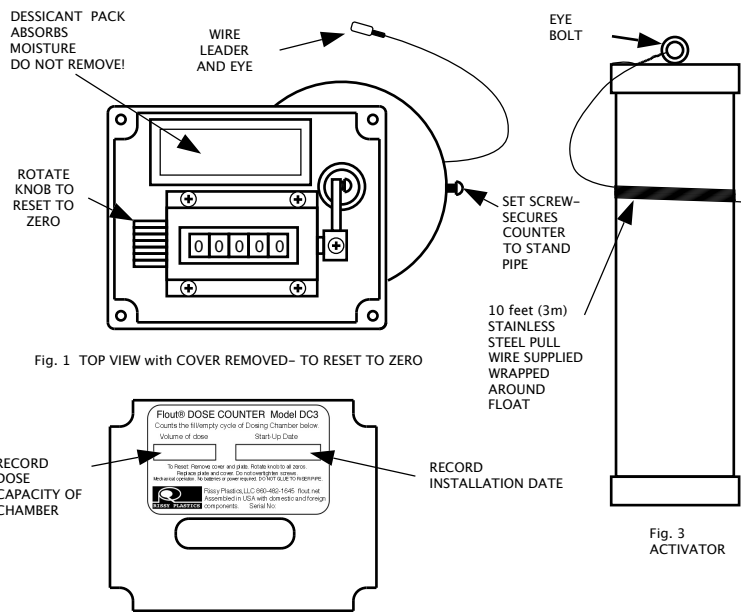
A minimum of 6" (150mm) liquid rise and fall is required for the counter to work but below 8" (200mm) proper setting is critical. For a low rise/fall, a Low Profile Activator (LPA) is available*. The Activator (3) comes with 10 ft. (3m) of stainless steel pull wire attached. If more is needed, use stainless steel picture wire. Splice securely.

The Activator is semi-buoyant and will sink on it's own. As long as the bottom of the Activator is above the lowest water level and the top is below the highest level the counter will work.

Determine the dimension "H" (4) from the top of the installed standpipe to the highest liquid level. Unwind the wire and pass it through the Eye (1). Set the wire to same dimension "H"(4) from the underside of the cap (4) to the eye bolt on the Activator (3). Twist the wire multiple times and trim the excess, leaving a bit of extra wire if adjustment is needed. Dimension "L" may also be used. Set the bottom of the Activator to the lowest water level. The semi-buoyant Activator will keep the pull wire taut to prevent tangling.

Lower the Activator into the stand pipe, slip the cap onto the pipe, and lock with the setscrew(1). **DO NOT GLUE!**

If using method (12), remove the wire from the Activator. Attach the wire to the eye. Mark the dimension "D"(4) on the wire with a marker or tape, pass it down the stand pipe and through the small hole. Push the cap onto the pipe, and lock with the setscrew(1). **DO NOT GLUE!** Using the access hole, attach the Float at the mark. Twist multiple times and trim the wire leaving a bit extra for adjustment.



TESTING:

Remove the clear cover and label plate (2) (if equipped). The activator lever (1) should be down. Test fill the chamber. The lever should rise before the chamber reaches maximum depth. If the lever does not rise, remove the Counter and increase the length of the wire. As the chamber empties, the Float will pull the lever back down, registering a count.

FINISHING UP:

Reset the counter by rotating the knob (1). Using an indelible marker, fill in the start-up date and dose capacity on the label plate (2) (if equipped). Do not remove the dessicant (1). Replace the cover. Do not overtighten the screws.

MONITORING:

Each dose cycle will raise the count by one. Multiply the count times the dose capacity to find out the amount of liquid dosed. If the system is in use but no count is registered, inspect the counter float and the operation of the dosing devices, otherwise call for service.

MAINTENANCE

Little is necessary. If moisture accumulates inside, remove the cover and allow it dry out. If the cover becomes difficult to see thru from scratches and outside dirt, spray and wipe it with WD40 to clear it up.

WARNING!

Installing, servicing, and inspecting this product may involve entering confined spaces. Confined spaces may contain deadly gasses and/or insufficient oxygen. Confined space entry requires special training, equipment, and permitting. Failure to adhere to this warning may result in injury or death. Rissy Plastics shall not be held liable for any injury or death resulting from any confined space entry.



*LOW PROFILE ACTIVATOR

The standard Activator can be used down to a 6"(150mm) rise/fall however, settings below 8" (200mm) are more critical to make. Therefore, below 8" a Low Profile Activator (LPA) is advisable.

The LPA has a larger diameter. If pipe mounting is used, a 4" (100mm) pipe and a 3"x4" coupler are required.

Counter model DC4 is supplied with an LPA and is 4" pipe ready.